

“Towards Active and Healthy Ageing”

Northern Ireland Reference Site

Achieving Improved Outcomes for Citizens, Providers,
and Industry

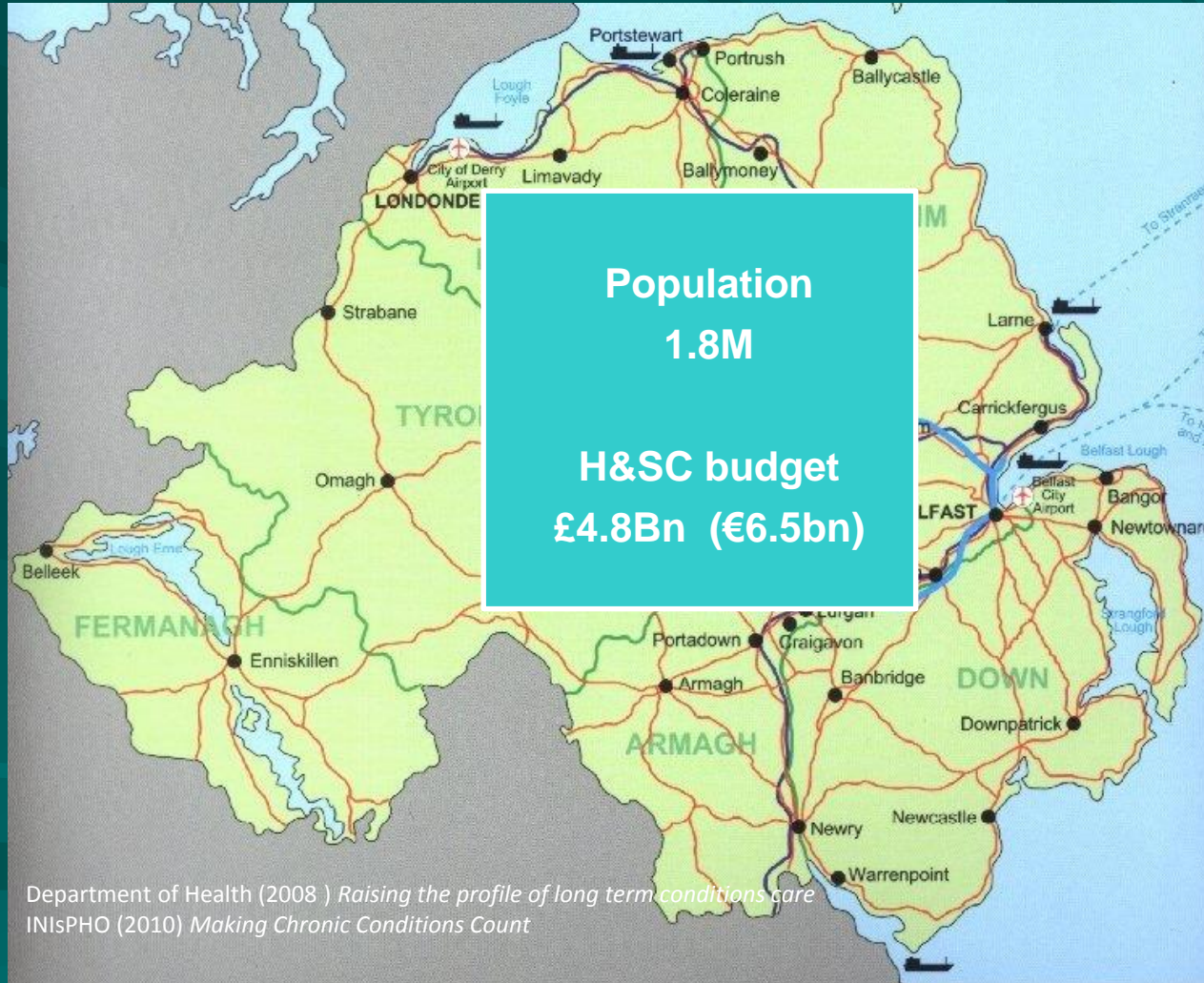
Hospital La Fe, Valencia

21 June 2016

John Farrell

Department of Health, (Northern Ireland)

Northern Ireland Health and Care Challenges



Growing and ageing population

2016 - 380k citizens >60
2029 –estimated 560k >65
Life Expectancy :
Males: 81 Females 84

Increase in number of people with Long Term Conditions . Accounts for:

- 60% of all visits to GPs
- 72% of acute care bed days
- 69% of health and social care spend.

Over reliance and demand on acute hospital beds

Workforce
Numbers and Skill Mix

Finance

Public Expectations

Responding to the Challenges

Some Of The Things We Are Doing:

- Health and Social Care Reform and Transformation Programme
- More effective Commissioning of Health and Social Care Services
- Greater adoption of Innovation and Technology
- Sharing and exchanging knowledge and experience internally and with other Regions
- Greater engagement with researchers and industry so they have a better understanding of health and care needs
- Innovative Procurement to identify new solutions and products
- Life and Health Science – The New Frontier

Promoting and Embedding Innovation

■ Health and Economy Agenda

- Connected Health and Prosperity MOU between Health and Economy Departments
- Contribution of Health to Sustainable Economic Growth, policy paper
- Northern Ireland Economic Strategy – includes specific Health actions
- Life and Health Science Strategy (published later this year)
- Northern Ireland Executive Economy and Jobs Initiative

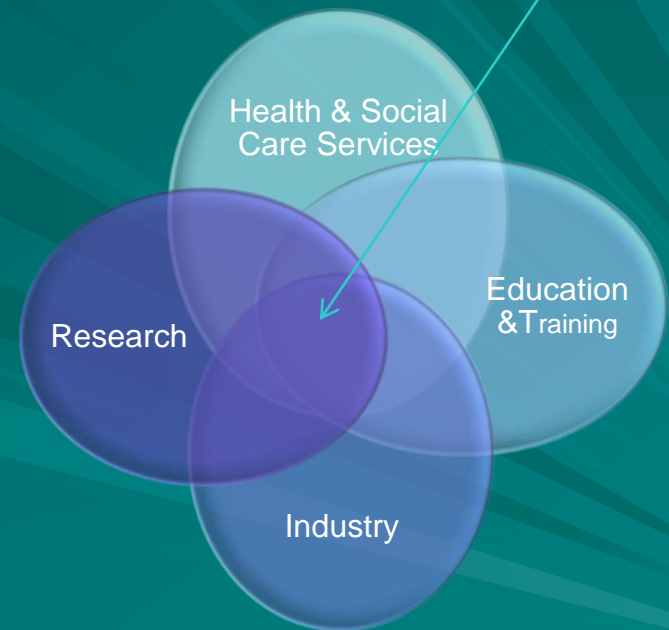
■ Quadruple Helix Model in Place at many levels:

- NI Connected Health Eco-System
- Integrated Care Partnerships
- NI Cancer Research Network
- NI Clinical Trials Network
- NI Clinical Innovation Collaborative
- Connected Health Innovation Centre
- Clinical Translational Research and Innovation Centre
- Medicines Optimisation Innovation Centre
- North West Health Innovation Corridor (this is a cross border entity between Northern Ireland and the Republic of Ireland)

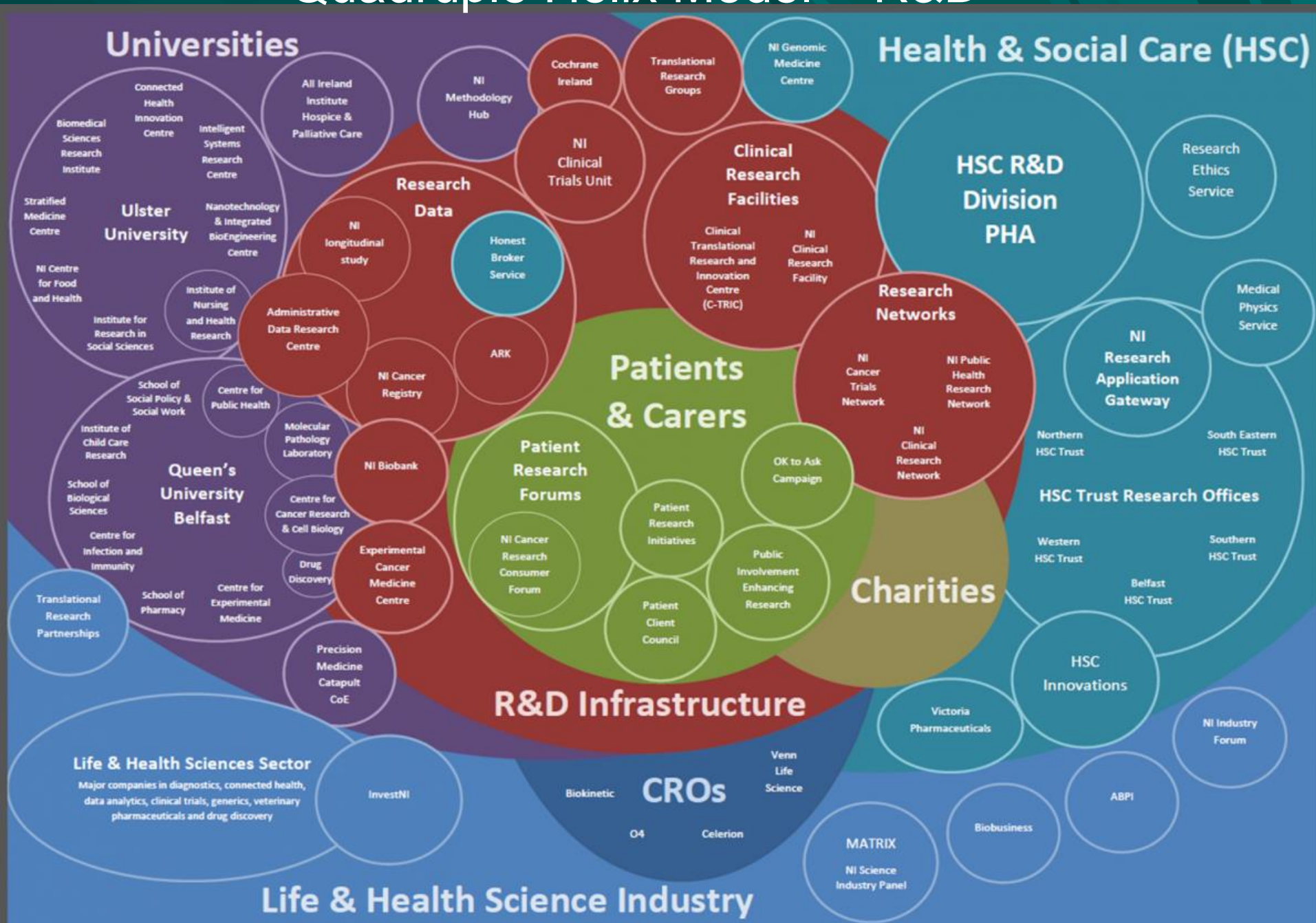
Stimulating Innovation in Health and Social Care

- Improve engagement across the health, academic, education, and industry sectors
- Researchers and industry can better understand health priorities
- Innovation and R&D targeted more effectively
- Supports the dual objectives of improving health and well-being and developing a sustainable economy
- Engagement with Local Authorities

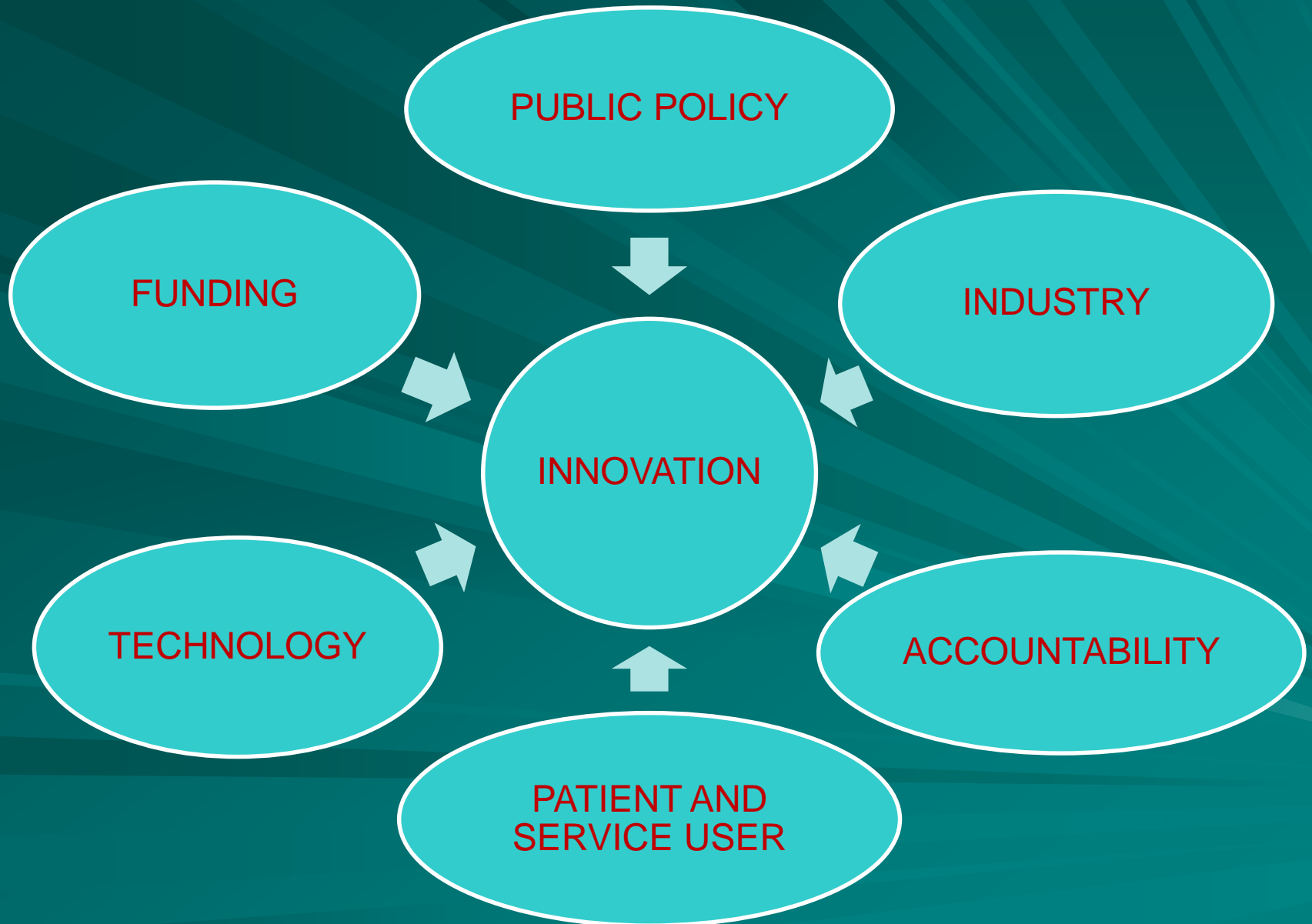
Engine for investment growth and economic development



Quadruple Helix Model - R&D



Forces Affecting Innovation



Addressing the Forces Affecting Innovation

- Cross Government Strategies and Policies, e.g. NI Economic Strategy, NI Innovation Strategy, etc
- £33m identified for health and care R&D in 2016/17
- Established an eco-system and various stakeholder alliances reflecting the quadruple helix model in order to develop a shared understanding of health and care needs
- Industry offered “Innovation Vouchers” which can be used to fund dedicated clinician time
- Access to health service for clinical trials and testing
- Shared IP with percentage of revenue generated from commercialisation of solutions reinvested within health service R&D
- “Honest Broker Service – managing anonymised data for research purposes

Northern Ireland Key Strengths

Many and Varied but Include:

- Integrated Health and Social Care system (at all levels from Policy Development to Service Delivery) since 1973
- 1 of 6 Precision Medicines Centres of Excellence in the UK
- Clinical Trials and Diagnostics in areas such as oncology and respiratory disease
- Nutrition
- eHealth
- Integrated Health and Care Electronic Care Record
- Medicines Management

What Next

Opportunities include:

- Build on our strengths
- Data Analytics
- Interoperability
- Mobile Working
- New Models for Telemonitoring
- Citizen access to health and care information
- Life and Health Science Strategic Action Plan

Willing to learn from and work with other Regions

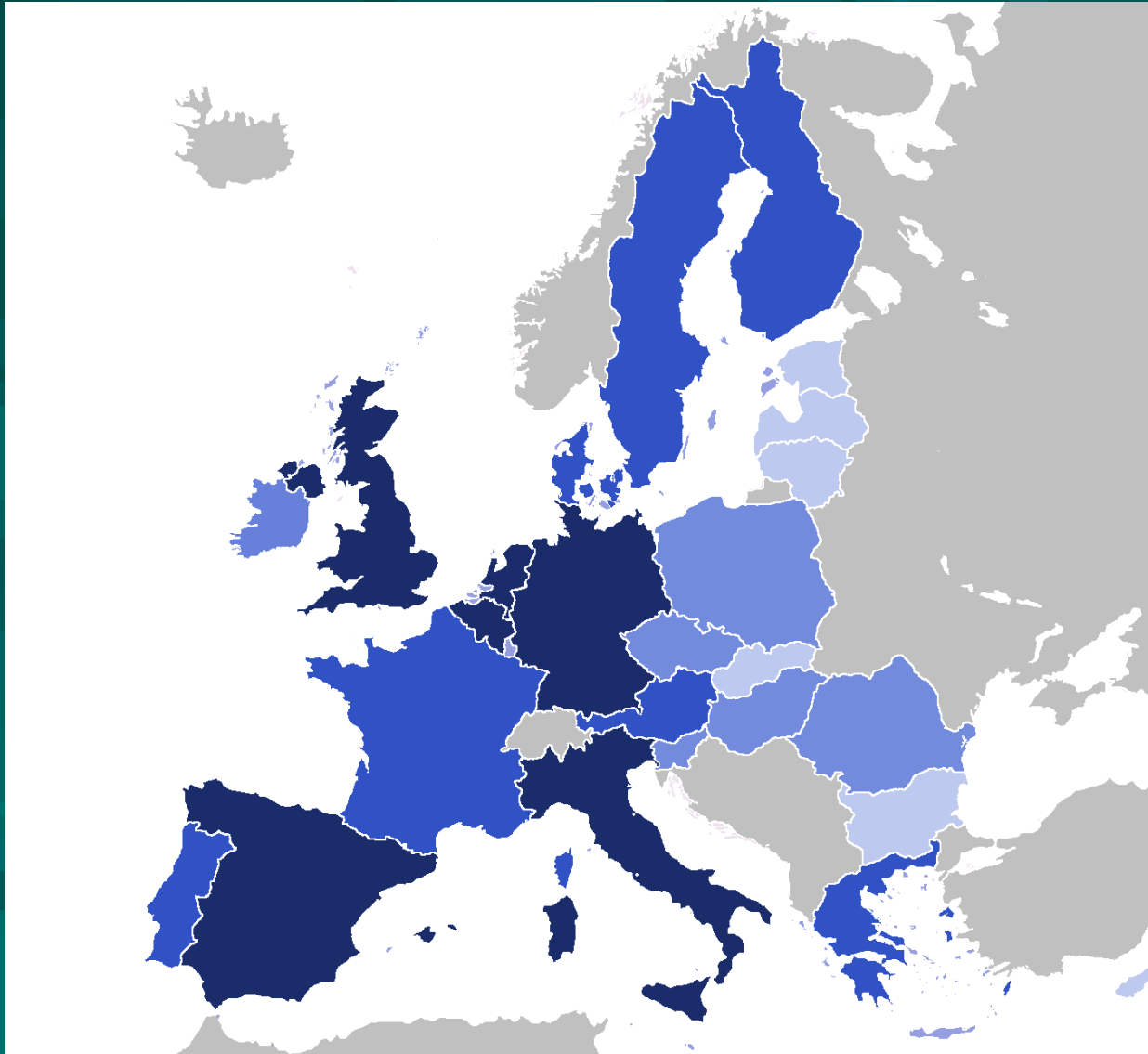
Supporting Active and Healthy Ageing

- Strategies / Policies, e.g.
 - Active Ageing Strategy
 - R&D Strategy
 - Smart Specialisation Framework
 - Innovation Strategy
 - eHealth and Care Strategy
 - Quality 2020
- Electronic Care Record
- Telehealth and Telecare Services
- eHealth / mHealth / assistive technologies
- Acute Care at Home
- Northern Ireland Single Assessment Tool (NISAT)
- Integrated Medicines Management
- Reablement
- Self Directed Support
- Housing Adaptions
- EIP on AHA – Reference Site and Commitments

External Engagement

- Challenges Northern Ireland are facing are not unique – opportunities to exchange knowledge and solutions with other Regions
- Create partnerships to address challenges , share innovative good practices, and develop projects in response to EC funding calls
- Formal relationships with a number of EU Regions and USA where there are shared objectives and challenges
- Reference Site status has supported our journey and will help identify Twinning Opportunities
- Supporting European Commission's objectives under **EIP- on Active and Healthy Ageing**
- Established and lead the EIP on AHA Reference Site Collaborative Network (RSCN) - 75 members following the 2nd Call for Reference Sites

Northern Ireland Partnerships in Europe



Thank You

e-mail: john.farrell@health-ni.gov.uk

Tel: +44 28 90 520239